

SEMARA IS

THE

W I A E C

CLUB BULLETIN

January 1978. Mike Ponte, W1BZJ and Milt Peters, W1WFX Responsible

Greetings from the folks who print the WIAEC bulletin. We hope to be able to get enough news to publish a monthly bulletin. Hope every one has a great '78'

Welcome New Officers

President:	Fernandes Pacheco, W1ZKH	Director	Arthur Marshall, W1FJI
Vice-Pres	Frank Fonseca, W1ASD	Director	Milton Peters, W1WFX
Secretary	Richard Hay, W1IE	Director	Michael Ponte, W1BZJ
Treasurer	Clarence Whitaker, W1IAZ	Trustee	Arlindo DosSantos, W1KFA

Results of 1977

It seems that our biggest accomplishment has been the new building. It sure is nice to be able to take off your coat and enjoy the meetings. The old hut seems more comfortable now that we have a better return of cold air to the boiler.

In 77 we also were recognized as a non-profit social group by the IRS \$\$\$\$. Our picnic was another great financial event that we have enjoyed. Hope 1978 brings as many accomplishments to SEMARA

Last year a special committee was initiated to investigate the pros-and-cons of the placement of the club station. Three basic plans were suggested:

- 1) Keep equipment in hut and remodel to make more comfortable.
- 2) Divide new meeting hall, build counters, extend coax and accessories.
- 3) Build addition to club.

The committee proposed that at our January meeting the membership vote for one of the three proposals to give them a plan the majority was in favor of so they could concentrate their efforts.

At the January meeting a vote was taken, and a better than 51% Majority was in favor of leaving the equipment in the hut.

1977 co-chairmen were Larry, N1LS and Ed, K1EJF. This years chairman is Norm W1ATI.

Extra Votes For 10.00 \$\$\$

Art IV Sec 2 para B states: Persons living in the same household as a full member will be eligible for family membership at one half the yearly dues, with all the privileges of a Full Member.

W 1 O N K Tower. UP or down ?

It has been 6 weeks since Don Sleeper has gone to court for the hearing on his tower. He says a similar hearing in the Supreme Court at White Plains New York has been deliberating for 12 weeks so maybe no news is good news. For those who haven't heard, Don was forced to remove the tower at his summer residence because it was an eye sore to the hestoric scenery. He has taken it to court. This fight is really our fight as one legal tower could eventually make it all towers.

There is a W1ONK tower legal fund, and donations are greatly appreciated. SEMARA donated 25.00 \$ and passing the hat at a meeting brought in \$ 75.00 . So if you haven't donated remember his fight is our fight.

Extra Votes For 10.00 \$\$\$\$

Art IV Sec 2 para B states: Persons living in the same household as a full member will be eligible for family membership at one half the yearly dues, with all the privileges of a Full Member.

W 1 0 N K Tower. UP or down .

It has been 6 weeks since Don Sleeper has gone to court for the hearing on his tower. He says a similar hearing in the Supreme Court at White Plains New York has been deleberating for 12 weeks so maybe no news is good news. For those who havn't heard, Don was forced to remove the tower at his summer residence because it was an eye sore to the hestoric scenery. He has taken it to court. This fight is really our fight as one tower could eventually make it all towers. There is a W10NK tower legal fund, and donations are greatly appreciated. SEMARA donated 75.00 \$ and passing the hat at a meeting brought in \$ 75.00 . So if you havn't donated remember his fight is our fight.

KM1CC What is that call? ??

The Marxoni station on cape cod will be operating from Jan 14 to Jan 21. The Barnstable Radio club is putting it on and K1 VV is listed as being the instigator. The station will be set up using all modes on 160 - 2 Meters. CW, SSR RTTY Slow Scan and they will attempt to work a/car. The station is planning to use 240 cycle tone to simulate spark gap CW. Transmissions will be in the 1st 24 kcs of the General portion. The station will be manned 24 hours a day, and open to all Hams and the General public. The Marxoni Museum will be open for two weeks because of the station being manned. The Barnstable club will have food for sale. A nearby Motel will be open. It sounds like an interesting educational time to get rid of the winter.

OVER (K)

" 2 nd Annual Installation Dinner
Don't forget this years installation banquet. It will be on January 29 th at Thads
Steak house. Orders must be in by the 19 th. If you have not received an applic-
ation they may be obtained at the club. Make checks payable to SEM:R..

GOSSIP Corner

Word has it that WALWGE (the little rascal) is going to be leaving us.

Special thanks to WALWIC for the fine job on the lawn.

KIANA was heard on-the wilson just using the rubber duchey. What was that
flushing noise ???

Green dress, baby bottles and WEN

How come Louis WALGDE and his Son Bob WALVQA did not decorate their houses with
lights this christmas??

WALFEM (foxtrot november mike) is building and grounds chairman.

WAL'S FAR, FLT, and WPIDEX report the patch is working fine

KFA heard going under city hall but never coming out!!!

Yes, Due to the extreme interest will continue our buy ,sell and swap column.

WALZxN is excepting applications to join his coffee club. Any one interested in
joining may apply.

CUT HERE

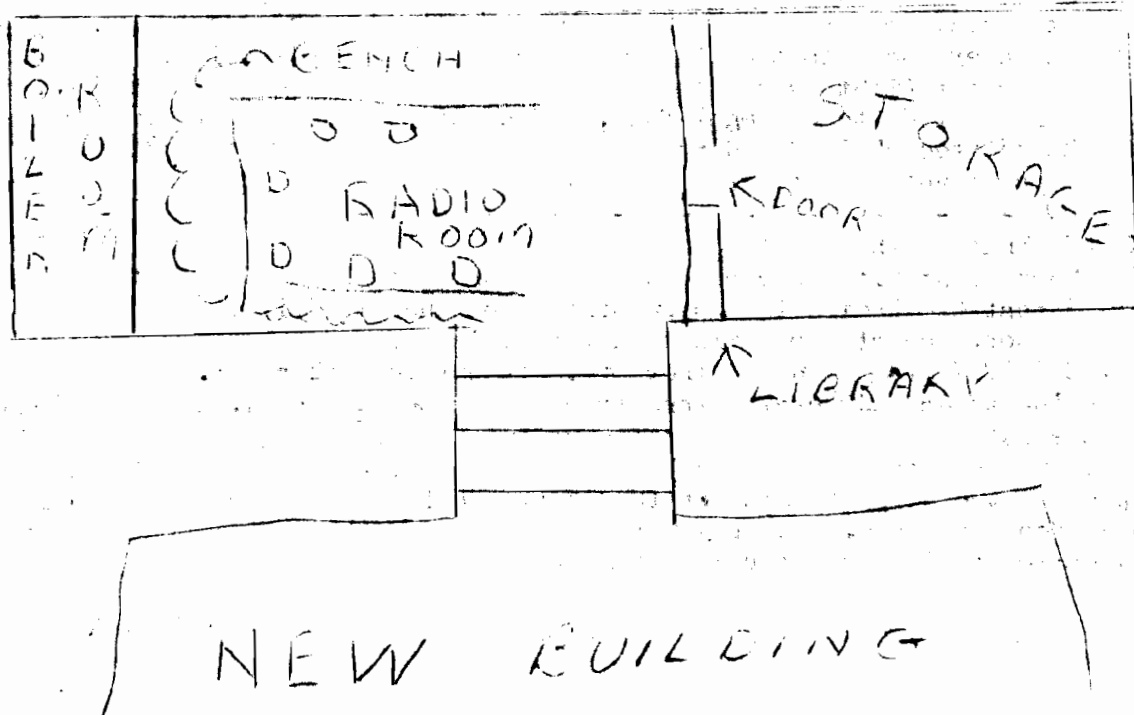
Name and call -----
Address _____
Grandmothers maiden name (Paternal) _____
How many nights could you attend? _____
Do you have an automatic coffee maker? _____ If yes how many cups. _____
Do you ever invite people over to your home? _____ If yes what is the seating capacity _____
How many cups do you drink per sitting? _____
Have you ever been known to eat more than two donuts? yes _____ No _____
Would you like to be a committee chairman? Yes _____ No _____
Please enclose a recent photo of yourself
Forward to: Coffee Club
141 Church St.
New Bedford, Mass. or call 9947520

Next Month WALUGK will do a Product report on the Heath Kit walkie.

Remember , we will print almost anything. Complaints, Praise, news about clicks.
Put your article in the old envelope under the phone in the hat or in the
news & pub bin in the new building.

Remember, we will print almost anything. Complaints, Praise, news about clicks.
Put your article in the old envelope under the phone in the hut or in the
news & pub bin in the new building.

ROUGH DRAWING OF PROPOSAL ONE



P.S. IF YOU GO TO THE COFFEE STATION AND WANT TO OPERATE, BRING YOUR LICENSE.

S. J. H. W. 13