



ZERO BEAT

Southeastern Massachusetts
Amateur Radio Association, Inc.
54 Donald Street
South Dartmouth, MA 02748



Volume 43, Issue 7

SEMARA-W1AEC

July 2007

“NO KIDS DAY” EVENT



BOB - K1KVV PRAYING FOR SOME KIDS TO SHOW UP AND HELP WITH THE THREE PIZZAS AS WELL AS GETTING ON THE AIR AT W1AEC ON SATURDAY, JUNE 16, 2007.

Kids Day could have been a fun time for some kids; but they were nowhere to be seen or heard at **W1AEC**. Surprisingly, propagation was fairly good and the band stayed open all afternoon.

Just before closing shop I did answer a Kids Day CQ and gave one youngster another contact for the day. At least I participated.

With three pizzas getting cold, I was fortunate to have the company of a cheering section made up of **Don - WA1BXY**, **Charlie - WA1JFD**, and **John - WA1LSH**. They made a quiet afternoon more fun and shared their experience in amateur radio. We had a nice rag-chew!

Plan now for the next Kids Day the first Sunday in January 2008. It is always the same format. Kids give their name, age and favorite color. They can take it from there and talk about school and sports and video games! The idea is to just let them experience the fun of amateur radio.

Can I count on you next year?

73 de Bob - K1KVV

JOHN - WA1LSH

John - **WA1LSH** says, “I have been on the air since 1965, I was only 15 years old at that time. My shack still has the radios of that era. There are no bells, whistles or digital read outs on these radios. Most of the radios that I have are Swans. I get excellent signal and audio when ever I am on the air. I do not know much about the newer radios with all the buttons and screens on them. The closest thing that I have to a new radio is my HT that I use on 2 meters once in a while. Someone had to show me how to set it up. I am use to turning the big knobs and tuning up the older rigs.

“If you would like to know more about my station you can go to: <http://www.thepointfx.com/wa1lsh>.”

You can catch him on the two evening nets: Tuesdays at 8:30 on 28.490 MHz USB and Wednesdays at 8:30 on 50.200 MHz USB if the band is not open.



JOHN - WA1LSH SHOWING OFF HIS ‘SHACK.’ HE ENJOYS THE CHEERFUL GLOW OF HIS VINTAGE TUBE EQUIPMENT.

ZERO BEAT

Published online monthly by the
Southeastern Massachusetts
Amateur Radio Association, Inc.
54 Donald Street,
South Dartmouth, MA 02748
(508) 997-7070

Website: <http://www.semara.org>
E-mail: clubinfo@semara.org

EDITOR Bob Kelley - K1KVV
E-Mail: editor@semara.org

2007 SEMARA OFFICERS

President

Louis Mester - W1CH

Vice President

Bob Kelley - K1KVV

Secretary

Armand Augustine - W1BUG

Treasurer

Mike McDonald - KB1NB

Board of Directors:

Marty Jordan - KA1YFV

Ed Duclos - WA1ZCB

John Carreiro - W1ZYV

Trustees: (year term is up)

Larry Houbre, Jr. - AA1FS (2008)-Ch

Bill Vincent - W1POW (2009)

Dave Dean - K1JGV (2010)

Tim Smith - N1TI (2011)

Ed Duclos - WA1ZCB (appt. 2007)

STANDING COMMITTEES

Building and Grounds

Mike Miller - N1ITQ

Scholarship

Larry Houbre, Jr. - AA1FS

Technical

Dave Goldstein - W1DJG

SPECIAL COMMITTEES

Activities

Scott Szala - W1EV

ARES/SKYWARN

Rob Macedo - KD1CY

New Building

Dave Dean-K1JGV

QSL Manager

John Nery - WA1ESO

Radio Events

Bob Kelley-K1KVV

Repeater

Rick Cabral-W1RJC,

Dave Goldstein-W1DJG

Website

Tim Smith - N1TI



It seems to me ...

de Bob - K1KVV <editor@semara.org>

That the summer doldrums has set in early. I can't seem to find any good material about what is going on at SEMARA!

If you want to get your picture in the next issue, just sent me a high resolution picture of your shack (1200 x 900 pixels or better). You can use the address above — attachments preferred.

What did you do for Field Day? As far as I could tell, we missed out on a fine day for a picnic. Do you think we are getting 'too old' for all this stuff? Then we'd better let some young and energetic people take over. Of course they will not do things exactly your way; but at least they will be doing it! So, what say? Can we start to think about turning over the reins to these younger hams?

In case you didn't notice, the informational packet that needs to be sent out on spending lots of money on our building to repair and/or to replace all or part of it hasn't yet materialized. It must if we are going to have a vote at the August business meeting. So what's the hold up? It seems that some members, perhaps you, would like to know what they are being asked to vote upon.

The Building/Renovation Committee (Dave Dean - K1JGV) has made lots of information public. All that seems to be required is to organize it, and supplement it in a few places, and simply send it to you. (The members decided last September that information should be mailed to every member to ensure that everyone would be aware of the issues and costs prior to coming to the business meeting for a vote.)

The only problem that I have had with all this is the lack of consideration to renovating the existing meeting hall without spending money on an addition. We rarely have a real need for extra space for our business meetings. So we must be concerned limiting the tickets when we throw a feast; there are other solutions to this problem, such as putting up a tent, which are less costly than putting up a larger facility.

Let's get behind the Building/Renovation Committee. They need to know which way to go. Razing the Quonset hut is just the first step.

HAMMIN' AROUND

Question* G9A14 If the SWR on an antenna feedline is 5 to 1, and a matching network at the transmitter end of the feedline is adjusted to 1 to 1 SWR, what is the resulting SWR on the feedline?

- A. 1 to 1
- B. 5 to 1
- C. Between 1 to 1 and 5 to 1 depending on the characteristic impedance of the line
- D. Between 1 to 1 and 5 to 1 depending on the reflected power at the transmitter

* 2007 Element 3 General Class Question Pool (effective 2007-07-01)

Answer on page 7



CLUB NOTES

July is the month for lots of outdoor activities. Why not combine this with amateur radio? You don't have a portable rig, you say! Well, how about setting up on your deck or patio or lawn and just use a good power cord and run an extra length of coax? You'd be amazed how much better operating conditions are when you are in the open. Try it; you'll like it!



Three candidates successfully passed exams at the VE session on June 2, 2007. They were:
Kevin C. Meagher – KB1PCV
Jerry F. Sounik – KB1PCW
Steven A. Wiczorek – KB1JCH
Job well done!
Enjoy your new privileges!



LOCAL NET ACTIVITY

Please support these local nets by checking in!

- 2-m Roundtable "Camel" Net** is held *every evening* at 7 p.m. on the SEMARA Repeater, W1AEC, 147.000+ with a PL of 67.0 Hz.
- 6-m USB Net** is held *Wednesdays* at 8:30 p.m. on 50.200 MHz. **Bob, N1HCW** (Acushnet) is net control.
- 10-m USB Net** is held *Tuesdays* at 8:30 p.m. on 28.490 MHz. **Bob, N1HCW** (Acushnet) is net control.
- 3868 kHz SEMARA Morning Net** is held *weekdays* from 7:30-8 a.m.

SUDOKU

Here's something to keep you busy while waiting for the 10-m net to start. **Solution is on page 7.**

9				4				5
2				1				8
	3			5				1
		5	9			8		
		8					6	
		7	4		3			
	4		5					
				9	6		7	
7						2		

NEXT SEMARA VE SESSION

Saturday, October 6, 2007

10:30 a.m.

Contact: Larry, AA1FS

LRHguy@earthlink.net

508-991-6055



POINT TO PONDER

"Even today a good many distinguished minds seem unable to accept or even to understand that from a source of noise, natural selection alone and unaided could have drawn all the music of the biosphere."

~ Jacques Monod

(from "Chance and Necessity," 1970).

AMATEUR NEWS

LIMERICK RADIO CLUB

Limerick Radio Club has been invited by the Foynes Flying Boat Museum to operate a special Amateur Radio Station in conjunction with the commemorative Transatlantic Re-Enactment Flight 1937 from Newfoundland Canada to Foynes Ireland.

A special call-sign has been allocated to the station **EI70FOY**. The station will be on the air from the 6th to the 8th of July 2007. On HF, the station will operate from 80 to 10 meters. It will also operate on VHF / UHF using the **EI70FOY** call-sign.

A special QSL card, commemorating the Re-Enactment Flight, will be sent to all stations worked over the three-day event. Send QSL cards to the Club's QSL Manager Alan Cronin. Limerick Radio Club can be contacted at ei4lrc@eircom.net or at <http://www.qsl.net/ei4lrc>.

AVERY GIVES A SIGNAL REPORT

THE HANDIHAM WORLD WEEKLY E-LETTER
FOR THE WEEK OF 27 JUNE 2007

Okay! The readability and signal strength system set up years ago sure got a work out in this contest. For those who might not know about this system, readability is numbered 1 to 5, 5 being the best and strength is numbered 1 to 9 with 9 being the best.

What I thought was kind of funny was what I heard over and over again during this contest both in past years and again this year. What I heard was:

"You're 5-9, 59 (Then the section, in this case Minnesota) Solid copy. Please repeat. Please repeat your name and section."

Somehow if the person is copying 5-9, which means "the best you can get", it makes no sense to me as to why they would need a repeat. If maybe the report was 2-5, I could understand the repeat.

I think if you are going to give a signal report, it should be an honest one, don't you?

So for now 73 & DX from **KOHLA - Avery**



CW

Here's what **Fred - KT5X** wrote about CW.

"Background: I am a teacher. I learned Morse at 12 years of age, now 61. I use CW exclusively.

Not everyone can learn Morse for a variety of reasons. Some people, especially a high percentage of those with dyslexia, can not discern as separate sounds which do not persist for relatively long periods of time, typically 200 ms. That is the speed of a dit (or a space) at about ten wpm which is why some people get stuck forever below ten wpm.

Morse, like all languages, is easier to learn while language areas of the brain are developing, but it can be learned later not so much with hard work, as consistent practice several times a day, day after day.

Here are the neurological steps involved in the process of traditional learning. Some of the newer approaches of listening to high speed early try to skip some of these steps with varying degrees of success for some people, and failure for others.

1. Traditional approach is to memorize the cipher. Dit-Dah is an A. You generally learn the letters in groups of five letters at a time. *Making words of the few letters learned, rather than code groups, may encourage moving into language interpretation later on rather than neurological auto-response.* Code is then deciphered from a "look-up table" residing in short-term memory. With practice, short-term memory can interpret the cipher up to about **10 wpm**.

2. Regular use across days and weeks and sometimes months eventually leads to the mind committing the look-up table to long-term memory. Once the look-up table is moved into long-term memory, access and retrieval is faster. Response time is reduced such that with further practice, speed will rapidly rise from the previous plateau of about 10 wpm, to a new plateau of about **18 wpm**. Hence the old General test was 13 wpm. You could not have General privileges until you had located Morse in long-term memory.

3. What happens next may vary with how one is trained. Many old timers moved the look-up table into a reflexive response, literally governed by the spinal-column. This op could copy code groups the same as words; typically typed the copy, and did not know what was typed until they went back and read it. Constant practice with code groups (or just contest call-signs) will lead to this result.

Most ham ops would prefer to move the code from

(Continued on page 5)

AMATEUR NEWS

(Continued from page 4)

a memorized look-up table into the language area of the brain. It is almost an instantaneous response. At first it is letter by letter. Eventually it is by syllables, then sometimes even words. *The first "word" I learned to interpret instantly with the language center was "and" or "dit dididit" which I thought was "ES" as a kid, but now know is American Morse for the & sign.*

How to get it there? Invariably, when you are copying with the look-up table, you print, even if you never print normally. Once you have been at 18 wpm for a while, and feel stuck there, it is time to move on as it were. You can do so by forcing yourself, and it is difficult, forcing yourself to change script. Script runs the letters together into syllables and words and that is what accesses the language area of the mind.

4. Early on in the language center, you are hearing the op spell to you. You will generally comprehend this up to around **28 wpm**. This "plateau is less hard than previous ones. To go on past, put the pencil down, and just listen. In no time at all you will copy 30, 35, 40, 45 wpm. You don't copy "behind," you simply hear the person speaking. You either hear it or you don't (QSB, QRM, loss of concentration). You lean back in the chair, eyes closed, and words materialize in your head, you simply know what was said.

5. If somewhere between 45 wpm and 60 wpm the dits and dahs seem to blur into one another, you are normal. For me the limit seems to be **56 wpm**. I know precisely because when I copy calls from the contest simulators, it always settles on that speed.

What's it all about, Alfie?

As the speed rises, you will struggle more and more, concentrating to actually hear what happened. It isn't the speed of it, but the hearing of it that is limiting now. It's about your built in "echo-suppressor," also known as *the Haas Effect*. The normal person does not discern as separate sounds which do not persist for at least 20 ms (the speed of a dit or space at 60 wpm). It is theorized this came about to make speech understandable in an echoing environment (caves?).

Surround sound capitalizes on this effect by the way. The same sound as is in the front speakers are fed to the rear speakers 7 ms later. You can not discern it, but the ear hears it, the mind interprets it as an echo, and this provides the full sensation of

"live."

People who copy 70, 80, and 90 wpm, and there are a few, are among the small percentage of people who are abnormal in a special way. They do not have built-in echo-suppression. If you have it or if you don't, you have no idea what the other one perceives.

But you CAN beat it! The echo suppressor is active up to about 1,500 cycles. Echoes are weak at high frequencies, hence our echo-suppression is poor or non-existent there. Those "stuck" between 50 and 60 wpm may wish to experiment with adjusting your radio to listen to high speed Morse at extremely high frequencies.

I have done it, and had no trouble copying 75 wpm for the first time. I calmly say, no trouble. Truth is, the ear-piercing frequency was such an unpleasant screech, that I have never bothered again ;-)

Experimentation with learning code by listening to Morse characters at 35 wpm right off the bat skips the lower stages of interpretation and attempts to jump into the language areas of the mind. One might wind up jumping into the auto-neurological response instead of language, however, and be able to type it without actually understanding it. You also may not have the interpretive capacity at slow speeds since you don't even know the code your copying. so it has to be realized that the short-cut is a mixed bag.

Choose your method, enjoy the challenge, have fun. But if after months of consistent practice, you can not get past ten wpm, especially if you know you are dyslexic, feel no guilt, and don't let anyone put you down. We each have our special abilities, or lack of them. So what. I can't dance to save my life!

72 Fred - KT5X (aka W5YA when QRP)

K2 # 700

P.S. Origin of "HI HI" for laughter. You will note everyone sends the I by spacing the two dits of the I. They do not send, didididit didit. They send didididit dit dit. slightly spaced. Dit-dit is the letter "O" in American Morse. You are actually sending American Morse for "HO HO". Saying, "HI HI" on phone is, well, pathetic. Laugh, for crying out loud ;-)"

THANKS TO ED - WA1ZCB FOR SHARING.





MEETING MINUTES



June 6, 2007

Call to order:

Meeting called to order at 7:00 PM by **Louie, W1CH**.

Salute to the Flag

Roll Call:

33 present; No Guests

Secretary's Report:

A motion made by **Don, N1PMB** to accept the report as posted on the website was unanimous.

Treasurer's Report:

A motion made by **Tim, N1TI** to refer the report for audit was passed unanimously.

Standing Committee Reports

Building and Grounds: Chairman Mike, N1ITQ reported that the grass has been cut regularly. A discussion ensued pertaining to the cleaning proposal made at past meetings. It was noted that no one has been appointed, and that only one individual had indicated an interest. No action was taken.

Technical Committee: Chairman Dave, W1DJG reported that nothing much had been done in the past month with any projects. He said that everything seemed to be running smoothly. He stated that he would try to get some of the contemplated projects started during the next months, now that better weather is coming.

Scholarship Committee: No One Present to Report

Special Committee Reports

Activities Committee: No One Present to Report
ARES/Skywarn: No One Present to Report

Communications

A registered letter sent to AL Costello with "return receipt request" was returned because the letter was never picked up or accepted at the destination. Two tries at delivery were made, and the letter was returned to SEMARA

Ratification of New Applicants

No applications received this month

Presidents Comments

No comment by the President this month

Old Business

Don, N1PMB questioned the legality of the last months vote concerning the options that the club received from the New Building Committee. He stated that at a previous meeting, the club had voted to send out an informational package to all members by mail, explaining the options forwarded by the

building committee. This had not been done; and for this reason, the vote was an illegal one. Discussions took place with pros and cons. Don stated that this action, would probably not change the outcome of the vote, but was still necessary to satisfy the parliamentary rules that the club is operating under. It was left that information packages would be sent out to all members.

New Business

A motion was introduced by **Armand, W1BUG**, that starting immediately, the Club Treasurer would be the only person to act as "Liaison between the Tower operator, and SEMARA" and results of discussion, agreements, etc. will be reported back to the membership for final approvals. No other person will be authorized to discuss membership business with the tower operator on behalf of SEMARA. A communication is to be forwarded to the tower operator informing him of this procedure. The motion passed unanimously.

A motion by **Dave, W1DJG** to move up the July meeting failed. It was noted that the July meeting would fall on the night after the fourth, and is usually a low turnout meeting.

A motion by **Dave, W1DJG** that voting on the issue of the New Building should be delayed until the August meeting. It passed 30 – 2.

For the Good of the Club

Bob, K1KVV said that he always needs input and tidbits about area happenings from members. Photos are always welcome, and that they will be inserted into *Zero Beat* editions.

Bob, K1KVV reminded all that "KIDS DAY" is Saturday, June 16, at 2:00 PM. He asks that members bring kids to the event here at the clubhouse.

Dave, K1JGV stated for the record, that procrastination at this point in time would push the schedule and building construction into the New Year.

Don, N1PMB asked if the New Building Committee could have numbers on construction of building. He would like to see data on different sizes and types.

Dave, W2DAN made a motion to adjourn. It passed unanimously without discussion

Meeting Adjourned at 8:15 PM.

Respectively Submitted
Armand, W1BUG Secretary



JULY VE SESSIONS

Walk-ins permitted unless otherwise noted.
<http://www.arrl.org/arrlvec/examsearch.phtml>

SEMARA Clubhouse — 10:30 a.m. 6 Oct
 Larry Houbre-AA1FS
LRHguy@earthlink.net
 508-991-6055

Braintree, MA — 8:45 a.m. 14 July
 William Needham-K1WN
K1WN@aol.com
 781-843-4000

Canton, MA — 7:30 p.m. 19 July
 Lou Harris-N1UEC
N1UEC@Norwood-ARC.org
 508-668-0858

Cranston, RI — 9:00 a.m. 28 July
 Ken Carr-KB1AWV
KB1AWV@arrl.net
 401-828-1665

Fall River, MA — 7:00 p.m. 16 July
 Skip Denault-KB1CNB
skip@NewTestamentSchool.org
 774-644-3469

Falmouth, MA — 9:00 a.m. 14 July
 Ben Fleck-W2LYE
BenFleck@cape.com
 508-540-2583

Middletown, RI — 9:00 a.m. none
 Jack Garforth-K1IG
K1IG@verizon.net
 401-683-2250

Providence, RI — 7:00 p.m. 12 July
 Lou Mester-W1CH
W1CH@cox.net
 401-263-6045

Slatersville, RI — 9:00 a.m. none
 Robert Jones-WB1P
WB1P@arrl.net
 401-333-4787

NE FLEA MARKETS

<http://www.arrl.org/hamfests.html>

14 July : Pen-Bay ARC Union, ME
 Scott — 207-354-6809
 15 July : Flea @ MIT Cambridge, MA
 Nick — 617-253-3776

SOME JULY CONTESTS

<http://www.arrl.org/contests/>

MI QRP July 4th CW Sprint - 2300Z Jul 4-0300Z Jul 5. See www.gsl.net/migrclub.

DARC 10 Meter Digital "Corona" - RTTY/AMTOR/PACTOR/PSK31/Clover from 1100Z-1700Z Jul 8. See www.darc.de/referate/dx.

FISTS Summer Sprint - CW from 1700Z-2100Z Jul 13. See www.fists.org.

The summer E_s season is a great time to give that all-mode rig a try. Even a simple horizontal dipole will bag some contacts!

CQ WW VHF Contest - all modes, from 1800Z Jul 21-2100Z Jul 22. Frequencies: 50 and 144 MHz bands, except 146.52 MHz (and other national simplex calling frequencies) and repeater frequencies. Info: www.cqww-vhf.com.

The IOTA contest is a great way to get started accumulating those island QSOs.

RSGB Islands-On-The-Air Contest - CW/SSB, from 1200Z Jul 28-1200Z Jul 29. Frequencies: 80-10 meters. Info: www.rsgbhfcc.org.

B. The matching network at the transmitter end of the feedline acts as an impedance transformer to match the transmitter impedance, hence the 1 to 1 SWR at the transmitter. The antenna feedline still exhibits the same SWR as before, 5 to 1.

6	5	2	4	3	8	6	1	7
4	7	1	6	9	2	3	8	5
9	8	3	1	7	5	2	4	6
2	6	5	3	8	4	7	9	1
7	9	4	5	2	1	8	6	3
3	1	8	7	6	9	5	2	4
1	4	9	2	5	7	6	3	8
8	3	7	9	1	6	4	5	2
5	2	6	8	4	3	1	7	9

SEMARA HandiHam Affiliate

Southeastern Massachusetts Amateur Radio Association, Inc., 54 Donald Street, South Dartmouth, MA 02748

LOCAL REPEATER DIRECTORY

See <http://www.semara.org/repeaters.htm>

Frequency	CTCSS	Call	Location
144			
145.110 -	67.0	KB1BWN	New Bedford
145.130 -	151.4	WF1A	W Greenwich, RI
145.150 -	123.0	WA1DGW	Fall River
145.450 -	100.0	W1SYE	Portsmouth, RI
145.490 -	67.0 ¹	W1SMA	Fairhaven
146.655 -	88.5	WA1GPO	Falmouth
146.685 -		N1ZIZ	Plymouth
146.700 -		K1CR	Cranston, RI
146.730 -	67.0	W1SGL	Sandwich
146.760 -		W1HQV	Scituate, RI
146.805 -	67.0	NN1D	Fall River
146.835 -	192.8	WA1QCA	Johnston, RI
146.880 -	100.0	WC1R	Newport, RI
146.940 -		K1KYI	Lincoln, RI
146.955 -	88.5	K1PBO	Dennis
147.000+ SEMARA	67.0*	W1AEC	Dartmouth
147.045+	141.3	W1HDN	W Warwick, RI
147.120+	173.8	K1WEW	Portsmouth, RI
147.135+	67.0	KA1GG	Taunton
147.165+	67.0	WA1HAH	Exeter, RI
147.180+	67.0	W1MV	Bridgewater
147.195+	127.3	K1SMH	Attleboro
147.315+	67.0	WG1U	Plymouth
147.330+	173.8 ²	W1AQ	E. Prov., RI
147.345+	88.5	KB1QL	Vineyard

* IRLP-4347 & E-Link-44347

¹IRLP-4617 & E-Link-4611; ²required for use of IRLP-4907

440

441.350+	103.5	KA1RCI	Providence, RI
442.200+	88.5	KE1AK	Fall River
442.350+	67.0	WG1U	Plymouth
442.950+	82.5 ⁵	K1RK	Barnstable
443.450+	88.5	K1MYL	Westport
443.500+	141.3 ⁵	K1PBO	Dennis
443.750+	118.8	N1YHS	Bourne
443.800+	88.5 ³	W1SMA*	Dartmouth
443.850+	141.3	AA1PL	Exeter, RI
444.250+	141.3 ⁵	WA1GPO	Falmouth
444.350+	88.5	W1ACT	Fall River
444.550+	88.5	W1MV	Bridgewater
447.025 -	77.0 ⁴	N1JBC	Johnston, RI
447.075 -	88.5	N1DZD	Kingston
449.175 -	100	N1RMH	Plymouth
449.275 -	DPL 244	W1WNS	W. Bridgewater

³IRLP-4259 & E-Link-4259; ⁴IRLP-5920 & E-Link-55920; ⁵ Cape Net
* OFF THE AIR

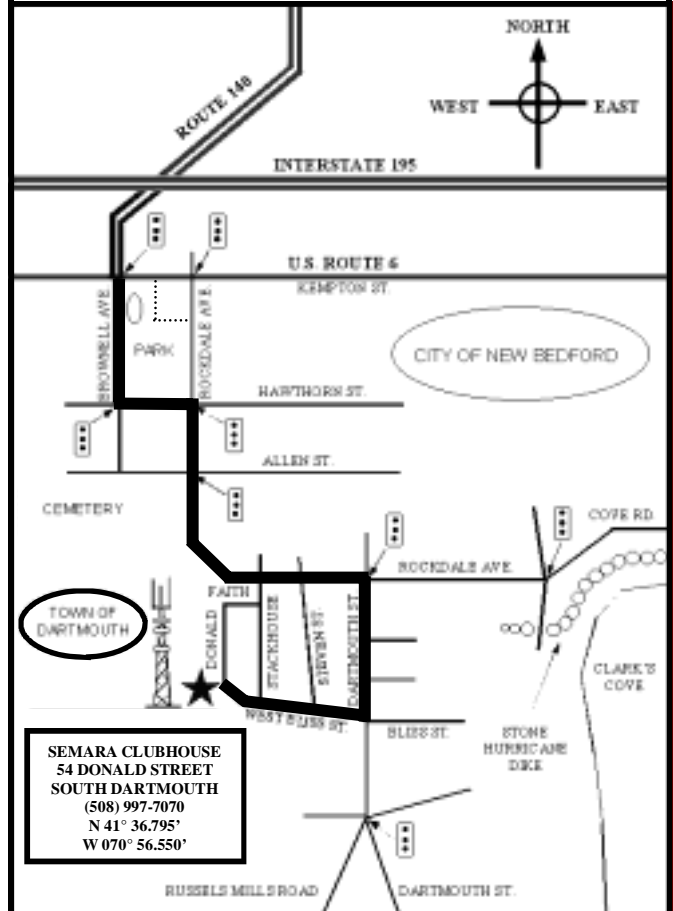
FISTS CW no.10555

Grid Coordinates: **FN41mo**

GPS Coordinates:

Lat. N 41° 36.795' Long. W 070° 56.550'

Directions to SEMARA



MONTHLY BUSINESS MEETING: 7 PM FIRST TH
RAGCHEW AT THE CLUBHOUSE: 7-11 AM SU

— **MOST-OF-THE-TIME ACITIVITIES** —

EARLY BIRD BREAKFAST: 6 AM TU & TH

The Symposium

851 Mount Pleasant Street, New Bedford

CLUB COFFEE MEET: 1 PM WEEKDAYS

Boston Coffee & Bagel

122 Allen Street (corner of Dartmouth Street)
New Bedford

LUNCHEON: 11:30 AM FR

Meet at the clubhouse at 11:15 AM to decide which local restaurant is to have the honor of our presence that week